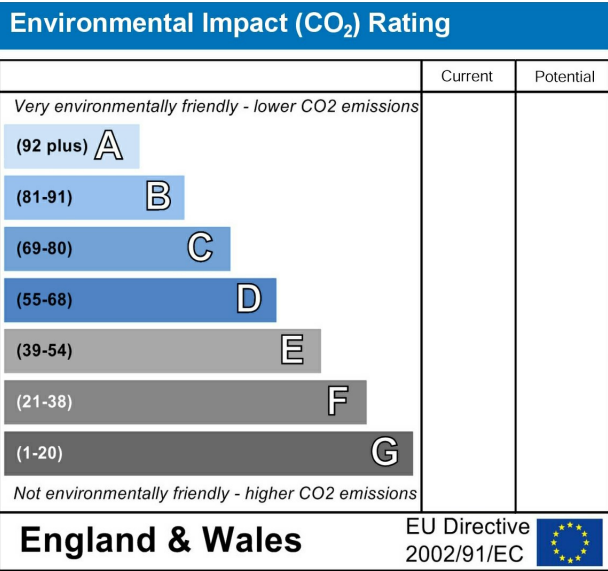
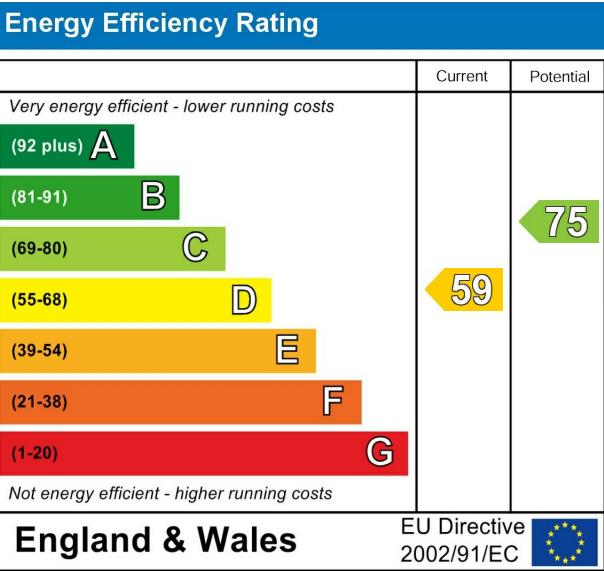


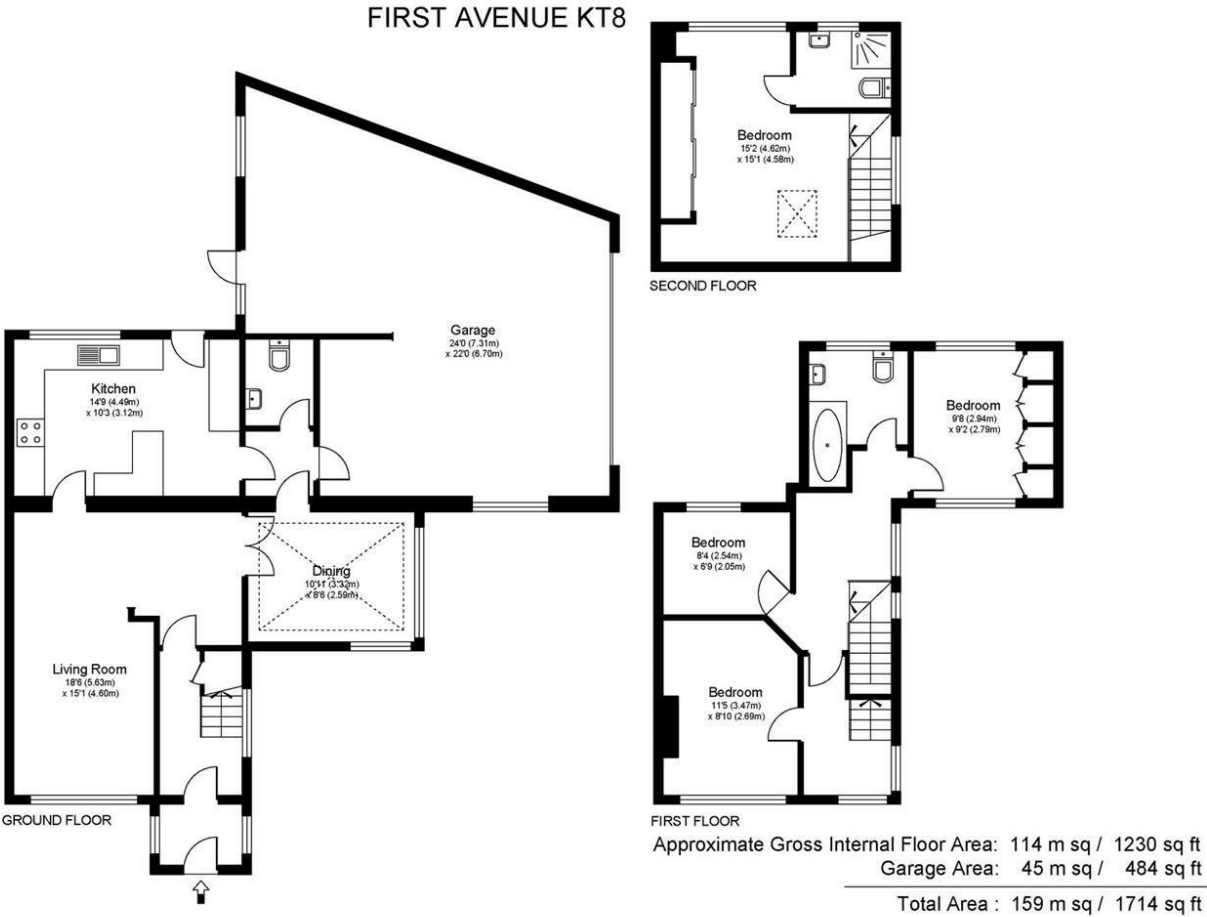
First Avenue, West Molesey, Surrey, KT8 2QJ



Offers In Excess Of £500,000 Freehold

Harmes Turner Brown are pleased to offer to the market this extended, spacious, well presented family home Located within easy reach of schools, shops and buses to East Molesey village and Hampton Court with its Palace, restaurants and train station. Accommodation comprises : Entrance porch, Entrance hallway, L-shape lounge, Dining room, Kitchen breakfast room, Cloakroom/wc. Upstairs there is three bedrooms two double, good size single and modern family bathroom. There is a further double bedroom with en-suite shower converted in the loft. The property offers front and rear gardens, the rear has a decked patio stepping down on to a lawn area the front is mostly laid to lawn with mature plant and shrub borders and a high hedge to create privacy. Other benefits are double glazing and gas central heating throughout. Large double garage / games room with power and light. Off street parking for two/three cars. This property is a must see to appreciate all it has to offer.

First Avenue, West Molesey, Surrey, KT8 2QJ



Whilst every attempt has been made to ensure the accuracy of the floor plan contained here, measurements of doors, windows and rooms are approximate and no responsibility is taken for any error, omission or misstatements. These plans are not to scale and are for representation purposes only as defined by RICS Code of Measuring Practice and should be used as such by any prospective purchaser. Specifically no guarantee is given on total square footage of the property if quoted on this plan. Any figure given is for initial guidance only and should not be relied on as a basis of valuation.

- SEMI DETACHED HOUSE
- FOUR BEDROOMS
- KITCHEN / BREAKFAST ROOM
- OFF STREET PARKING
- DOUBLE GLAZING
- EXTENDED FAMILY HOME
- TWO BATHROOMS
- DOUBLE GARAGE / GAMES ROOM
- FRONT AND REAR GARDENS
- GAS CENTRAL HEATING

This plan is a representation of the property and measurements, where given, are approximate. None of the fixtures and fittings have been tested by us. These details are thought to be materially correct but we cannot guarantee there are no error and emissions and they do not form part of any contract

